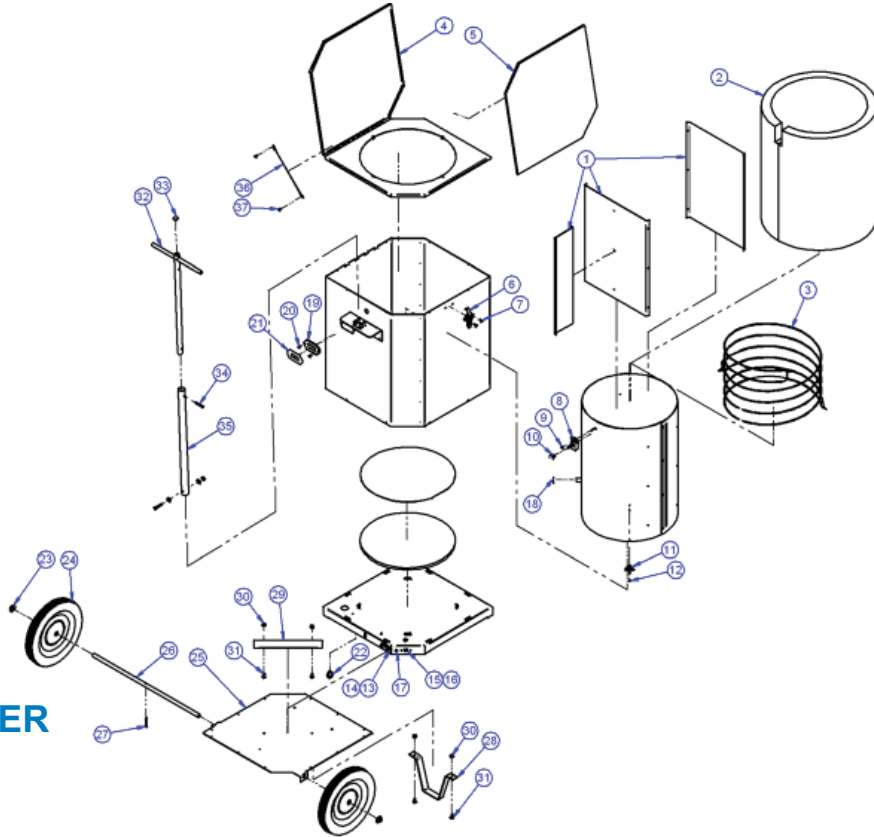




# Repair Parts List and Diagram for DryRod®II Type 15 Series Ovens



**CLICK HERE TO ORDER PARTS NOW!!!**

Item No.	Description	Qty/Oven	Part No. 120/240V Models
1	Divider/Shelving Kit	1	1257520
2	Insulation	1	1257320
3	Heating Element Kit	1	1257370
Lid Assembly Kit Includes			1257250
4	Lid Assembly	1	
5	Insulation		
Latch Kit Includes			1257380
6	Latch	1	
7	Rivet	2	
Variable Thermostat Kit Includes			1257430
8	Variable Thermostat	1	
9	Nut	1	
10	Knob	1	
Preset Thermostat Kit Includes			1257435
11	Preset Thermostat	1	
12	Rivet	2	
Power Inlet Kit Includes			1257390
13	Rivet	2	
14	Power Inlet	1	
Voltage Selector Switch Kit Includes			1257410
15	Rivet	2	
16	Voltage Selector Switch 120/240V	1	
17	Indicator Light	1	1257400
Thermometer Kit Includes			1257420
18	Push-nut	1	
19	Digital Thermometer	1	
20	Screw	2	
21	Label	1	
22	Clamp	1	

Item No.	Description	Qty/Oven	Part No. 120/240V Models
Jumper Wire Kit Includes			
not shown	Power Wires	8	1257533
	Ground Wire	1	
Power Cord Kit Includes			
not shown	120V North American Cord	1	1257540
Wheel Kit Includes*			
23	Axle cap	2	1257445
24	Wheel	2	
Base Cover Kit Includes			
25	Cover	1	1257200
26	Axle	1	
27	Pin	1	
28	Bracket	1	
29	Stiffner	1	
30	Nut	4	
31	Bolt	4	
not shown	Base cover without wheels - optional	1	1257210
T-Handle Kit Includes			
32	T-Handle	1	1257500
33	Plug	1	
34	Pin & Clip	1	1257431
35	Lower Handle	1	1257501
Lanyard Kit Includes			
36	Lanyard	1	1257537
37	Screws	2	
not shown	Cord Retainer Clamp Kit - Optional Provides stationary cord	1	1257570

\*Wheel kit contains one each Axle cap & Wheel. Purchase two kits to replace both wheels.

**Phoenix International, Inc. -8711 West Port Avenue - Milwaukee, WI 53224 USA**  
**Tel: (414) 973-3400 - Fax: (414) 973-3210 - www.phx-international.com**