

DryRod[®] Series Portable Electrode Stabilization Ovens

*Please read all instructions, paying special attention to all cautions or warnings, before beginning any repairs.



CAUTION:

All wiring should be done by licensed electricians in accordance with state and local codes, as well as the NEC (National Electrical Code) Standards. Improper installation or use may result in serious injury. Always remove oven from power source before troubleshooting or repairing.

PART #	DESCRIPTION (All 50-60 Cycles)	TEMP RANGE**	CAPACITY
Type 1 Series Ovens		100° to 300°F (38° to 149°C) +/-25°F (14°C) Adjustable thermostat	10 lb (5 kg) of 18" electrodes
1205500	100-240V AC/DC @ 60 watts* with indicator light		
Type 2 Series Ovens			20 lb (10 kg) of 18" electrodes
1205512	100-240V AC/DC @ 70 watts*		
1205510	100-240V AC/DC @ 70 watts* with digital thermometer		
Type 5 Series Ovens with Wheels			50 lb (25 kg) of 18" electrodes
1205522	120/240V AC @ 300 watts		
1205520	120/240V AC @ 300 watts with digital thermometer installed		
Type 5 Series Ovens with Handles			150 lb (70 kg) of 18" electrodes
1205523	120/240V AC @ 300 watts		
1205521	120/240V AC @ 300 watts with digital thermometer installed		
Type 15 Series Ovens: Portable Model			150 lb (70 kg) of 18" electrodes
1205532	120/240V AC* @ 600 watts		
1205530	120/240V AC* @ 600 watts with digital thermometer installed		
Type 15 Series Ovens: Bench Model			150 lb (70 kg) of 18" electrodes
1205533	120/240V AC* @ 600 watts		
1205531	120/240V AC* @ 600 watts with digital thermometer installed		

*Average stabilized wattage. Draw will increase during initial heating.

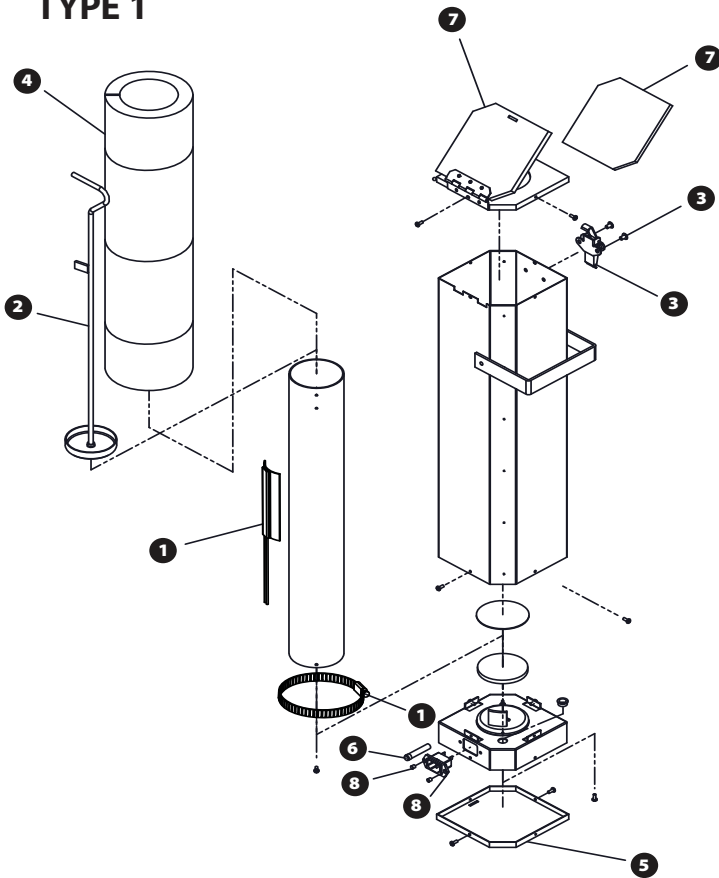
**Average stabilized temperature @ 70°F ambient temperature.

TYPE 1 & 2 REPAIR PARTS

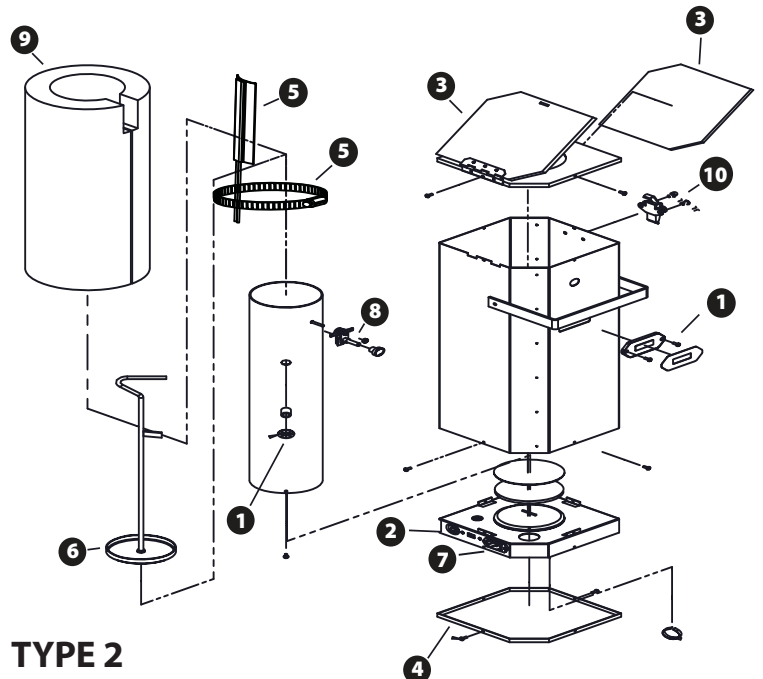
#	DESCRIPTION	QTY	PART #
2	Rod Elevator	1	1257260
4	Insulation	1	1257290
6	Indicator Light	1	1257401
	North American Power Cord	1	1257540
	European/Schuko Power Cord	1	4131046
1	Dual Voltage Heating Element Kit		
	Dual Voltage Heating Element	1	1257319
	Band Clamp	1	
7	Lid Assembly Kit		
	Screws	2	1257220
	Lid Assembly	1	
	Insulation	1	
3	Latch Kit		
	Latch	1	1257380
	Rivet	2	
	Jumper Wire Kit		
	Power Wires	1	1257530
	Ground Wire	1	
8	Power Inlet Kit		
	Rivet	2	1257390
	Locking Power Inlet	1	
	North American Locking Power Connection Kit		
	Rivet	2	1257395
	Locking Power Inlet	1	
	120V North American Locking Cord	1	
5	Base Cover Kit		
	Base Cover	1	1257160
	Screws	2	

#	DESCRIPTION	QTY	PART #
6	Rod Elevator	1	1257270
9	Insulation	1	1257300
2	Indicator Light	1	1257400
	North American Power Cord	1	1257540
	European Schuko Power Cord	1	4131046
5	Dual Voltage Heating Element Kit		
	Heating Element	1	1257318
	Band Clamp	1	
3	Lid Assembly Kit		
	Screws	2	1257230
	Lid Assembly	1	
	Insulation	1	
10	Latch Kit		
	Latch	1	1257380
	Rivet	2	
8	Variable Thermostat Kit		
	Variable Thermostat	1	1257430
	Nut	1	
	Knob	1	
1	Thermometer Kit		
	Digital Thermometer	1	1257420
	Screw	2	
	Label	1	
	Cable Tie	1	
	Jumper Wire Kit		
	Power Wires	8	1257531
	Ground Wire	1	
7	Power Inlet Kit		
	Rivet	2	1257390
	Locking Power Inlet	1	
	North American Locking Power Connection Kit		
	Rivet	2	1257395
	Locking Power Inlet	1	
	120V North American Locking Cord	1	
4	Base Cover Kit		
	Base Cover	1	1257170
	Screws	2	

TYPE 1



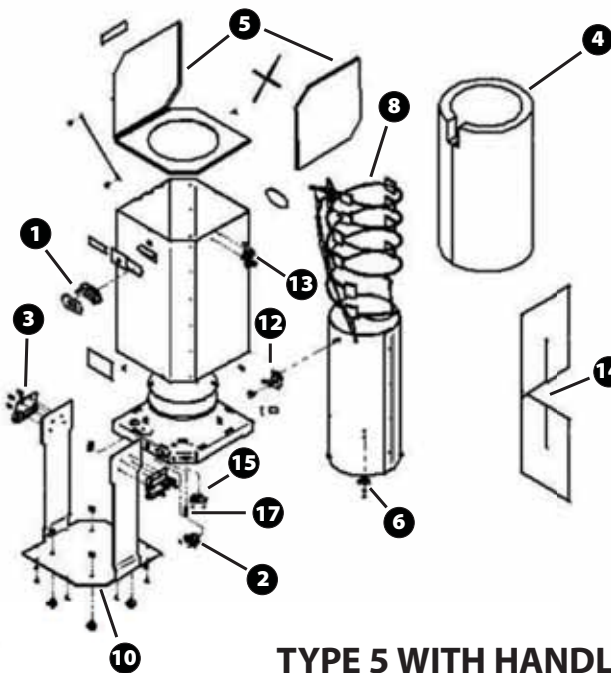
TYPE 2



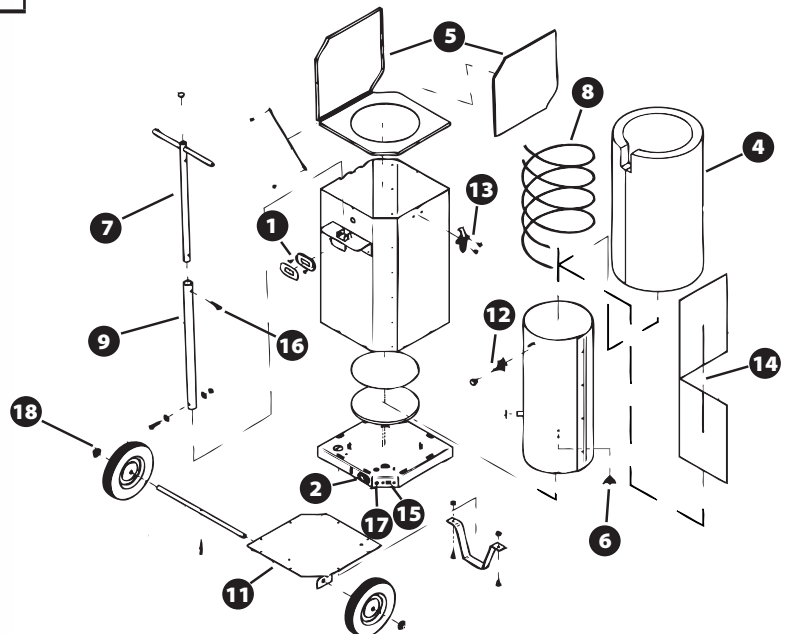
TYPE 5 REPAIR PARTS

#	DESCRIPTION	QTY	PART #	WITH WHEELS	WITH HANDLES
14	Divider Kit	1	1257510	Yes	Yes
4	Insulation	1	1257310	Yes	Yes
8	Heating Element Kit	1	1257360	Yes	Yes
5	Lid Assembly Kit				
	Lid Assembly	1	1257240	Yes	Yes
	Insulation	1			
13	Latch Kit				
	Latch	1	1257380	Yes	Yes
	Rivet	2			
12	Variable Thermostat Kit				
	Variable Thermostat	1	1257430	Yes	Yes
	Nut	1			
	Knob	1			
6	Preset Thermostat Kit				
	Preset Thermostat	1	1257435	Yes	Yes
	Rivet	1			
15	Voltage Selector Switch Kit				
	Rivets	2	1257410	Yes	Yes
	120/240V Selector Switch	1			
17	Indicator Light	1	1257400	Yes	Yes
1	Thermometer Kit (Standard on 1205521 and 1205520)				
	Digital Thermometer	1	1257420	Yes	Yes
	Screw	2			
	Label	1			
	Cable Tie	1			
	Jumper Wire Kit				
	Power Wires	8	1257532	Yes	Yes
	Ground Wire	1			
	North American Power Cord	1	1257540	Yes	Yes
	European Schuko Power Cord	1	4131046	Yes	Yes
2	Power Inlet Kit				
	Rivet	2	1257390	Yes	Yes
	Locking Power Inlet	1			

#	DESCRIPTION	QTY	PART #	WITH WHEELS	WITH HANDLES
	North American Locking Power Connection Kit				
	Rivet	2	1257395	Yes	Yes
	Locking Power Inlet	1			
	120V North American Locking Cord	1			
18	Wheel Kit (Purchase two kits to replace both wheels.)				
	Axle Cap	1	1257440	Yes	No
	Wheel	1			
11	Base Cover Kit				
	Cover	1	1257180	Yes	No
	Axle	1			
	Pin	1			
	Bracket	1			
	Nut	2			
	Bolt	2			
	Base Cover Without Wheels (Optional)	1	1257190	Yes	No
7	Pull Handle Kit (Standard on 1205520 and 1205522)				
	T-Handle	1	1257500	Yes	No
	Plug	1			
9	Lower Handle	1	1257501	Yes	No
16	Pin and Clip	1	1257431	Yes	No
3	Handle Kit (Standard on 1205521 and 1205523)				
	Screws	8	1257590	No	Yes
	Handle	2			
10	Base Kit				
	Rubber Feet	4	1257580	No	Yes
	Nut	4			
	Bottom Cover	1			
	Lock Washer	4			



TYPE 5 WITH HANDLES



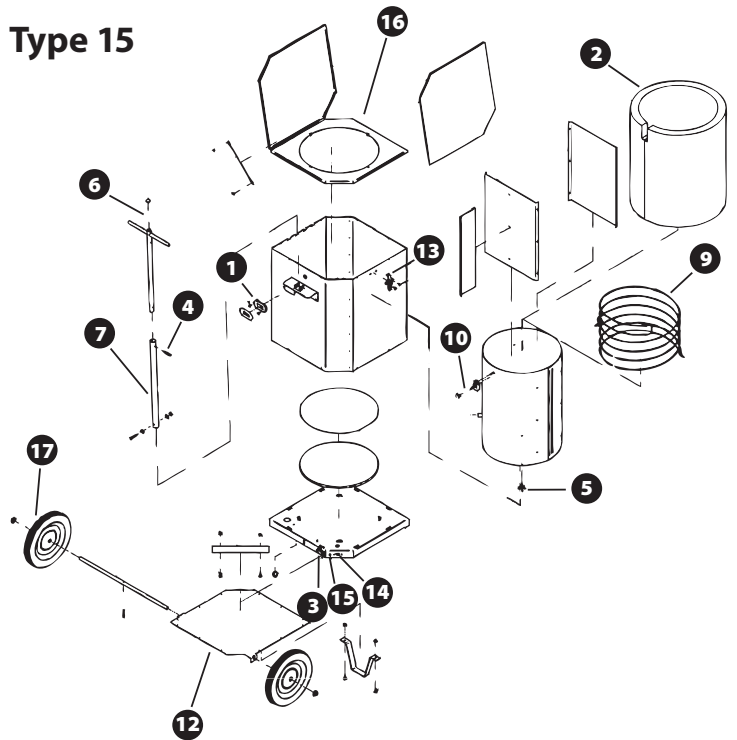
TYPE 5 WITH WHEELS

TYPE 15 & 15B REPAIR PARTS

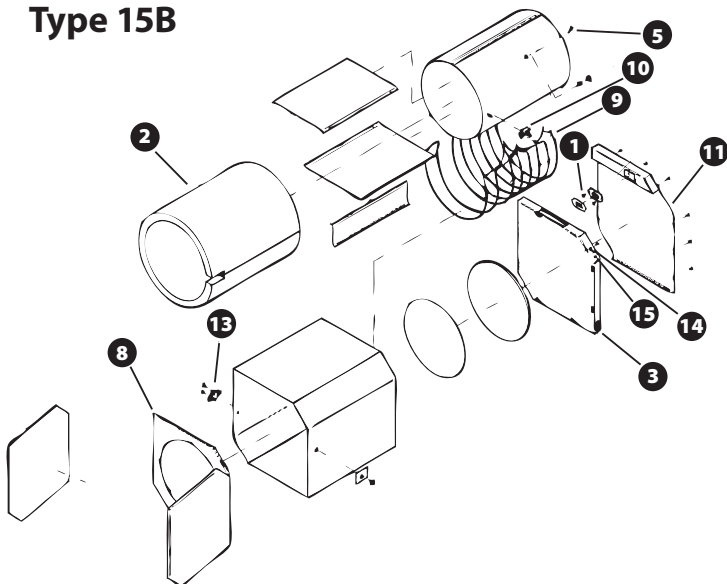
#	DESCRIPTION	QTY	PART #	PORTABLE MODEL	BENCH MODEL
2	Insulation	1	1257320	Yes	Yes
9	Heating Element Kit	1	1257370	Yes	Yes
16	Lid Assembly Kit (Portable Model)				
	Lid Assembly	1	1257250	Yes	No
	Insulation	1			
8	Lid Assembly Kit (Bench Model)				
	Lid Assembly	1	1257251	No	Yes
	Insulation	1			
13	Latch Kit				
	Latch	1	1257380	Yes	Yes
	Rivet	2			
10	Variable Thermostat Kit				
	Variable Thermostat	1	1257430	Yes	Yes
	Nut	1			
	Knob	1			
5	Preset Thermostat Kit				
	Preset Thermostat	1	1257435	Yes	Yes
	Rivet	2			
14	Voltage Selector Switch Kit				
	Rivets	2	1257410	Yes	Yes
	120/240V Selector Switch	1			
15	Indicator Light	1	1257400	Yes	Yes
1	Thermometer Kit				
	Digital Thermometer	1	1257420	Yes	Yes
	Screw	2			
	Label	1			
	Cable Tie	1			
	Jumper Wire Kit				
	Power Wires	8	1257533	Yes	Yes
	Ground Wire	1			
	North American Power Cord	1	1257540	Yes	Yes
	European Schuko Power Cord	1	4131046	Yes	Yes
3	Power Inlet Kit				
	Rivet	2	1257390	Yes	Yes
	Locking Power Inlet	1			

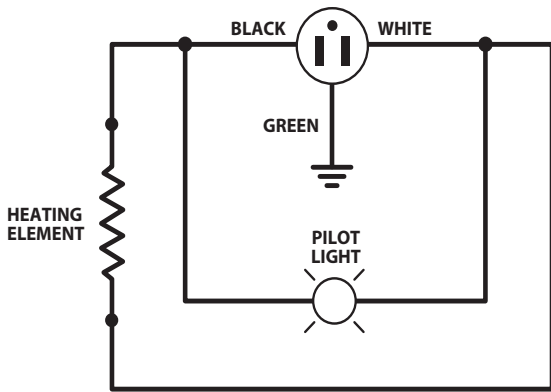
#	DESCRIPTION	QTY	PART #	PORTABLE MODEL	BENCH MODEL
	North American Locking Power Connection Kit				
	Rivet	2	1257395	Yes	Yes
	Locking Power Inlet	1			
	120V North American Locking Cord	1			
17	Wheel Kit (Purchase two kits to replace both wheels)				
	Axle Cap	1	1257445	Yes	No
	Wheel	1			
12	Base Cover Kit (Portable Model)				
	Cover	1	1257200	Yes	No
	Axle	1			
	Pin	1			
	Bracket	1			
	Stiffner	1			
	Nut	4			
	Bolt	4			
	Base Cover Without Wheels (Optional)	1	1257210	Yes	No
6	Pull Handle Kit (Portable Model)				
	T-Handle	1	1257500	Yes	No
	Plug	1			
7	Lower Handle	1	1257501	Yes	No
4	Pin and Clip	1	1257431	Yes	No
11	Base Cover Kit (Bench Model)				
	Base Cover	1	1257201	No	Yes
	Screws	12			

Type 15

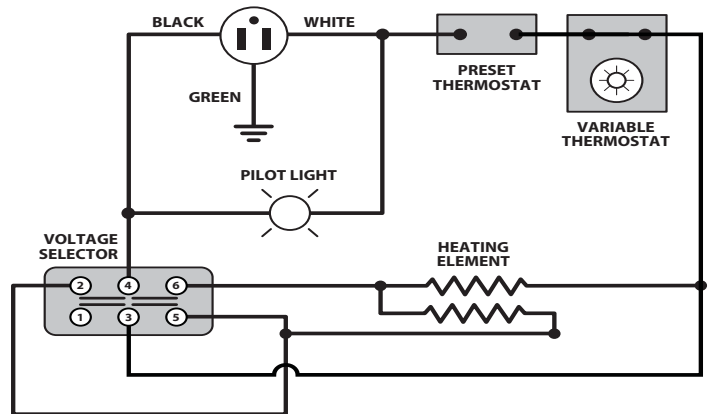


Type 15B

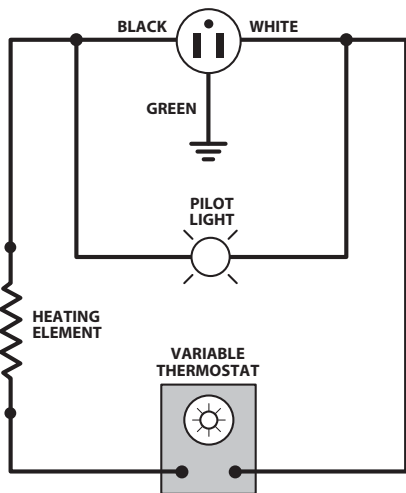




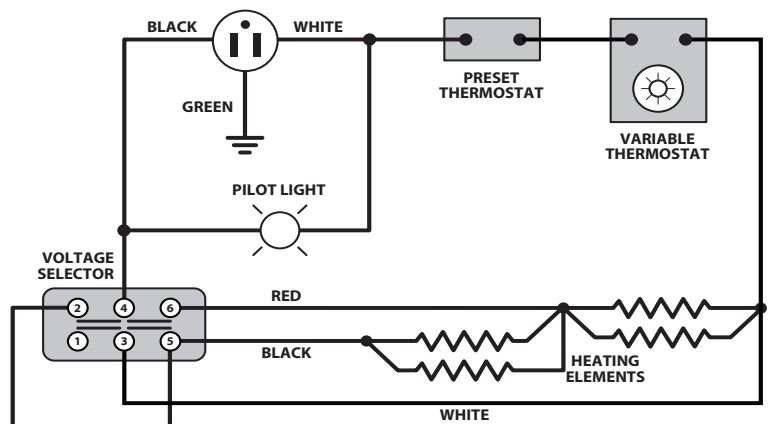
Type 1



Type 5



Type 2



Type 15/15B

DUAL VOLT HEATING ELEMENT (TYPE 1 & 2)

DISASSEMBLY

1. Unplug power cord. Confirm oven is disconnected from all power sources.
2. Remove 2 (two) screws and bottom cover.
3. Remove 2 (two) screws and top lid assembly.
4. If you have a Type 2 oven, remove the thermostat knob.
5. Remove 4 (four) screws and outer shell assembly. Unwrap insulation. See **CAUTION for handling the insulation.**
6. Loosen and remove existing band clamp. If your oven has the old style wire wrapped heating elements, remove the crimp-type electrical connectors from the element leads. Refer to Figures 1 & 2 below. Peel off foil tape pieces holding the heating elements.
7. Remove old heating element.

Dual Voltage Heating Element Kit			
Dual Voltage Heating Element	1	1257319	1257318
Band Clamp	1		
Connectors - Crimp	1		



HEATING ELEMENT INSTALLATION

1. Attach new heating element and band clamp to center of tube.
2. Connect heating element wires per corresponding wiring diagram.
3. Attach bottom cover plate with two screws.
4. Slide outer shell onto oven and attach with 4 (four) screws.
5. On Type 2 ovens, attach thermostat knob.
6. Place top cover on and align with inner tube. Attach with 2 (two) screws.
7. Plug cord in and verify oven heats properly.



CAUTION:

Oven contains fiberglass insulation which may cause skin irritation. Gloves and proper skin protection are recommended while handling the insulation.



NOTE:

Type 1 and 2 portable ovens now feature dual volt heating elements. Ovens with wire wrapped rope heating elements can be repaired using the dual volt heating elements featured here.

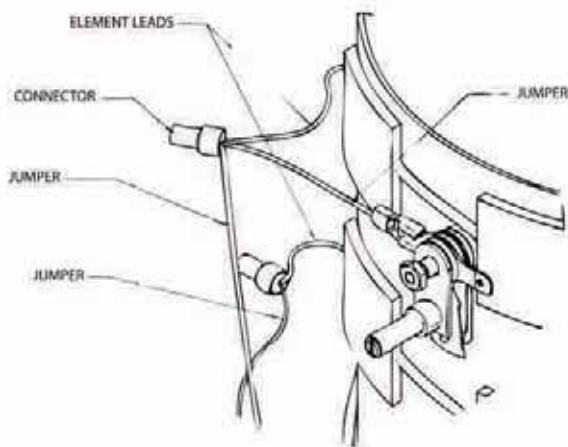


FIGURE 1

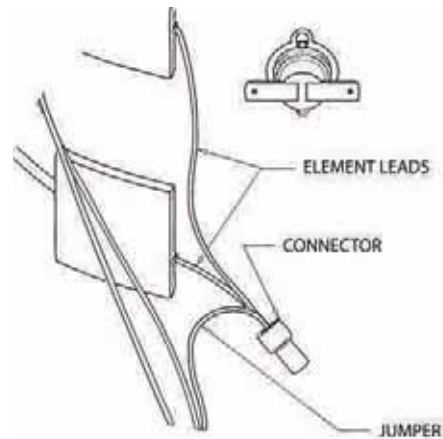


FIGURE 2

DISASSEMBLY

Heating Element Kit	1	1257360
---------------------	---	---------

1. Open lid and remove any contents.
2. On models with wheels and pull handle, pull the clevis pin and remove the extending handle.
3. Lay the unit down on its back (handle side) and remove the base cover, wheel and axle assembly to expose the electrical wiring. Disassembly requires removal of all attaching screws. Set the unit back upright.
4. Remove the 2 (two) screws securing the shell top and lid assembly to the painted outer shell and remove the lanyard screw. Remove the shell top assembly by pulling upward and set aside.



NOTE: Care must be taken not to over extend the hinge once the lanyard screw is removed.

5. If your model has a digital thermometer, remove the 2 (two) thermometer mounting screws. On older models you may have to peel off the label to expose the screws. Slowly pull the thermometer away from the shell, twist the display approximately 90° and push it back through the opening in the shell. The display will lay inside the outer shell on the insulation.
6. Remove the 8 (eight) lower screws that secure the painted outer shell assembly to the base. Carefully slide the outer shell up and off the insulated inner shell. The shell will have to be tipped slightly forward to clear the thermostat. As the shell is slid up, make sure the thermometer display and wires are not snagged or stretched. The painted lower handle tube will slide out of the mounting bracket. Set the outer shell aside.
7. Lay the thermometer back away from the shell, leaving the wires connected in place.
8. Remove the ties holding the fiberglass insulation in place. **See CAUTION below.**
9. Remove the crimp-type electrical connectors from the element leads. Refer to Figures 1 & 2 on previous page (Dual Volt Heating Elements).
10. Peel off and remove foil tape pieces that hold the old heating elements in place.

HEATING ELEMENT INSTALLATION

1. Using a ruler, mark the inner shell for the heating element locations as shown in Figure 3.
2. Cut the foil tape into strips approximately 2 (two) inches long to use in securing the heating elements to the inner shell.
3. Starting at the top above the thermostat, install the first element. Position the end as shown in Figure 3 and begin wrapping counter-clockwise around the inner shell for approximately 2 (two) turns. Place the cut pieces of foil tape as shown to hold the element in place. The element should be just snug on the shell. A piece of tape must be placed on each end of the heating element, at the point where the glass braid ends.

IMPORTANT: The heating elements must be positioned as shown for proper oven operation.

4. Install the second element in the same manner as the first, using the foil tape pieces to hold it in place.
5. Using the crimp-type electrical connectors supplied, re-connect the element leads and jumper wires according to the wiring diagram and Figures 1 & 2 on previous page (Dual Volt Heating Elements).



NOTE:

Jumper wires must be installed outside of insulation.

Thermometer probe wire must be installed outside of insulation.



CAUTION:

Oven contains fiberglass insulation which may cause skin irritation. Gloves and proper skin protection are recommended while handling the insulation.

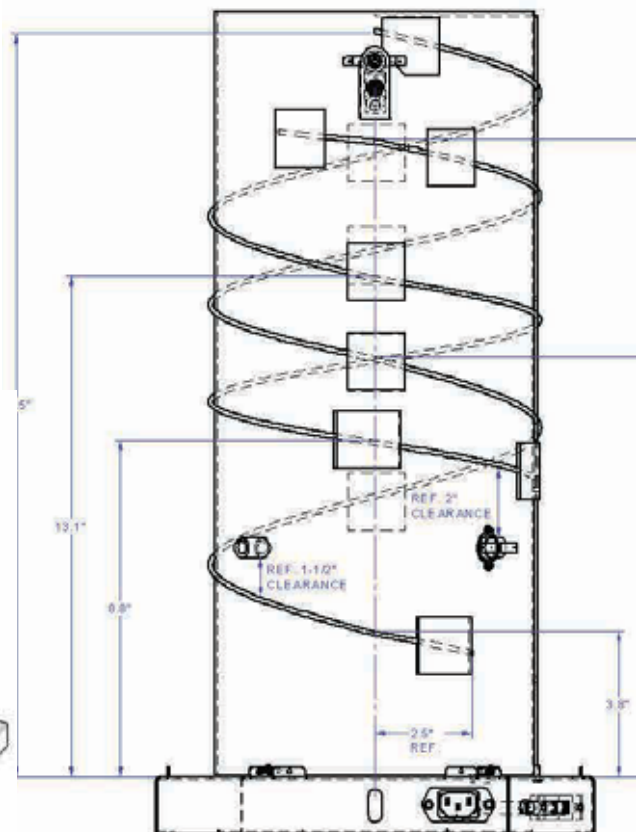
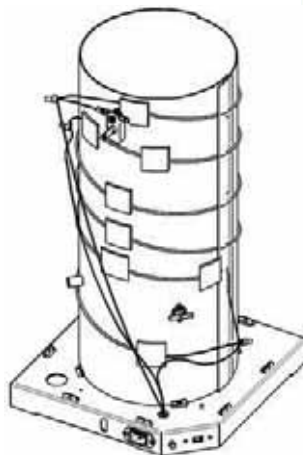


FIGURE 3

REASSEMBLY

1. The heating elements and jumper wires should be positioned as shown in Figure 3 on previous page.
2. Plug the jumper wire back into the thermostat. Be sure all other wires are properly connected.
3. Loosely wrap the insulation over the heating element and inner shell, aligning the seam at the thermostat. Be sure all jumper wires are outside the insulation as it is wrapped. Use the ties to hold the insulation in place.

IMPORTANT: The jumper wire must be routed over the insulation and must not touch the heating element.

4. Begin sliding the painted outer shell back down over the insulation. When the shell is about half way down, push the thermometer display through its mounting hole. Be sure to tip the shell slightly forward until it clears the thermostat knob. As the outer shell nears the base, be sure the painted lower handle fits back through the mounting bracket and the tabs on the base all fit inside the outer shell.
5. Secure the outer shell to the base with the eight (8) screws. Be sure the insulation does not sag down or stick out below the shell. If necessary, push the insulation back in around the bottom before securing and pull the insulation back up after the shell is installed.
6. Install the thermometer with the two (2) mounting screws. Apply the new thermometer label, making sure it is positioned inside the lip around the perimeter of the thermometer display.
7. Install the shell top, making sure the inner shell lines up inside the shell top hole. Also be sure the thermostat knob is centered in the shell hole. If necessary, adjust thermostat mounting to allow free movement. Secure the shell top with the two (2) screws. Re-attach the lanyard with the mounting screw.
8. Install the base cover and axle assembly using the screws previously removed. Do not tighten the screws until they are all started in order to allow for slight adjustments.
9. Install the handle and the clevis pin with clip.

HEATING ELEMENT (TYPE 15 & 15B)

DISASSEMBLY

Heating Element Kit	1	1257370
---------------------	---	---------

1. Open lid and remove any contents.
2. On models with wheels and pull handle, pull the clevis pin and remove the extending handle.
3. Lay the unit down on its back (handle side) and remove the base cover, wheel and axle assembly to expose the electrical wiring. Disassembly requires removal of all attaching screws. Set the unit back upright.
4. Remove the 8 (eight) screws securing the shell top and lid assembly to the painted outer shell and remove the lanyard screw. Remove the shell top assembly by pulling upward and set aside.



NOTE: Care must be taken not to over extend the hinge once the lanyard screw is removed.

5. If your model has a digital thermometer, remove the 2 (two) thermometer mounting screws. On older models you may have to peel off the label to expose the screws. Slowly pull the thermometer away from the shell, twist the display approximately 90° and push it back through the opening in the shell. The display will lay inside the outer shell on the insulation.
6. Remove the 8 (eight) lower screws that secure the painted outer shell assembly to the base. Carefully slide the outer shell up and off the insulated inner shell. The shell will have to be tipped slightly forward to clear the thermostat. As the shell is slid up, make sure the thermometer display and wires are not snagged or stretched. The painted lower handle tube will slide out of the mounting bracket. Set the outer shell aside.
7. Lay the thermometer back away from the shell, leaving the wires connected in place.
8. Remove the ties holding the fiberglass insulation in place. **See CAUTION below.**
9. Remove the crimp-type electrical connectors from the element leads. Refer to Figures 4 & 5 on next page.
10. Peel off and remove foil tape pieces that hold the old heating elements in place.



CAUTION:

Oven contains fiberglass insulation which may cause skin irritation. Gloves and proper skin protection are recommended while handling the insulation.



NOTE:

Jumper wires must be installed outside of insulation.

Thermometer probe wire must be installed outside of insulation.

HEATING ELEMENT INSTALLATION

1. Using a ruler, mark the inner shell for the heating element locations as shown in Figure 6.
2. Cut the foil tape into 8 (eight) strips approximately 2 (two) inches long to use in securing the heating elements to the inner shell.
3. Starting at the top above the thermostat, install the first element. Position the end as shown in Figure 3 and begin wrapping counter-clockwise around the inner shell for approximately 2 (two) turns. Place the cut pieces of foil tape as shown to hold the element in place. The element should be just snug on the shell. A piece of tape must be placed on each end of the heating element at the point where the glass braid ends.

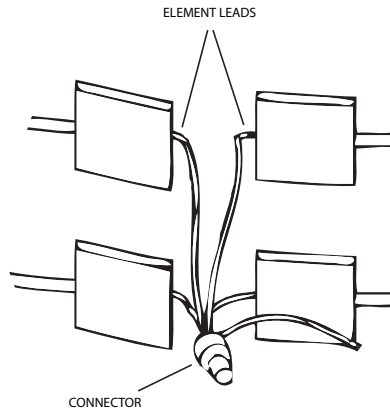


FIGURE 4

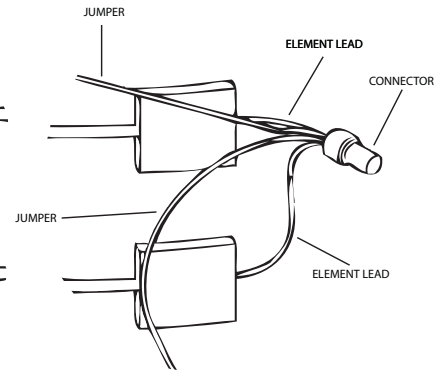


FIGURE 5

IMPORTANT: The heating elements must be positioned as shown for proper oven operation.

4. Install the second element in the same manner as the first, using the foil tape pieces to hold it in place. Note the starting point approximately 2 (two) inches below the first element.
5. Install the third element in the same manner, using the foil tape pieces to hold in place. Note the starting point approximately 2 (two) inches below the first element. Refer to Figure 6.
6. Install the fourth element, starting past the end of the second element installed.
7. Cut the remaining foil tape in two equal pieces and secure the elements in place as shown in Figure 6.
8. Using the crimp-type electrical connectors supplied, re-connect the element leads and jumper wires according to the wiring diagram and Figures 4 & 5 above.

REASSEMBLY

1. The heating elements and jumper wires should be positioned as shown in Figure 6.
2. Plug the jumper wire back into the thermostat. Check all other wires are properly connected.
3. Loosely wrap the insulation over the heating element and inner shell, aligning the seam at the thermostat. Be sure all jumper wires are outside the insulation as it is wrapped. Use the ties to hold the insulation in place.

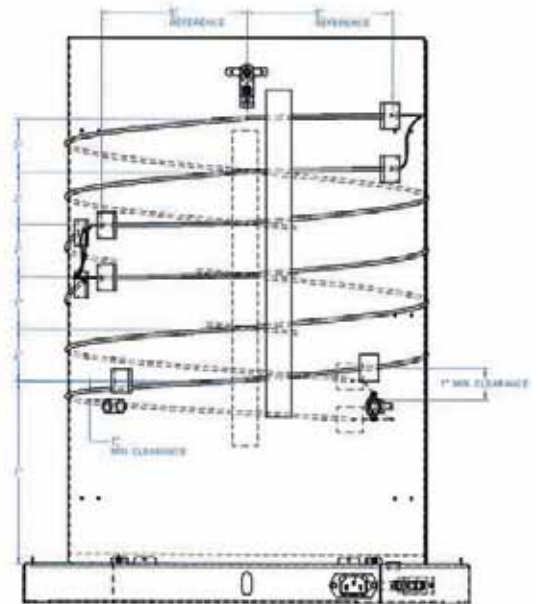
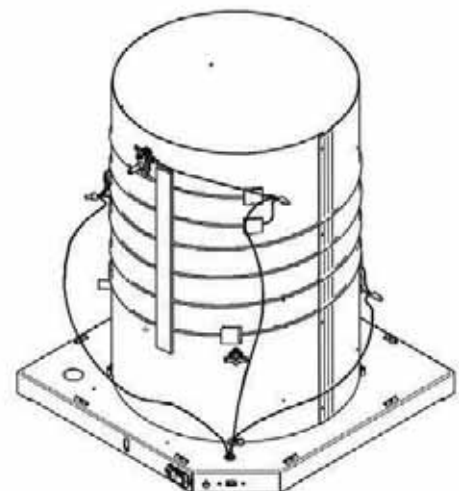


FIGURE 6

IMPORTANT: The jumper wire must be routed over the insulation and must not touch the heating element.

4. Begin sliding the painted outer shell back down over the insulation. When the shell is about half way down, push the thermometer display through its mounting hole. Be sure to tip the shell slightly forward until it clears the thermostat knob. As the outer shell nears the base, ensure the painted lower handle fits back through the mounting bracket and the tabs on the base all fit inside the outer shell.
5. Secure the outer shell to the base with the eight (8) screws. Be sure the insulation does not sag down or stick out below the shell. If necessary, push the insulation back in around the bottom before securing and pull it back up after the shell is installed.
6. Install the thermometer with the two (2) mounting screws. Apply the new thermometer label, making sure it is positioned inside the lip of the thermometer display.
7. Install the shell top, making sure the inner shell lines up inside the shell top hole. Also be sure the thermostat knob is centered in the shell hole. If necessary, adjust thermostat mounting to allow free movement. Secure the shell top with the two (2) screws. Re-attach the lanyard with the mounting screw.
8. Install the base cover and axle assembly using the screws previously removed. Do not tighten the screws until they are all started in order to allow for alignment adjustments.
9. Install the handle and the clevis pin with clip.



DISASSEMBLY

1. Remove the screws that secure the shell bottom and base assembly to the painted outer shell. Remove the outer shell with top lid assembly by pulling upward and set aside.
2. Pull the fiberglass insulation back to expose the thermostat and electrical connections. See **CAUTION**.
3. Remove the terminal from each side of the thermostat, taking care not to damage the connections by pulling on the wires. A needle-nose pliers may be required.
4. Using a 1/8" drillbit, drill out rivets securing thermostat to inner shell.

Preset Thermostat Kit		
Preset Thermostat	1	1257435
Rivet	2	



CAUTION:

Oven contains fiberglass insulation which may cause skin irritation. Gloves and proper skin protection are recommended while handling the insulation.

Care must be taken when handling the thermostat. Do not apply pressure on its components including the shaft and/or bottom leaf. The calibration of the part may be affected and cause undesired oven operation including under or overheating.

THERMOSTAT INSTALLATION

1. Align tabs on thermostat with existing holes in inner shell.
2. With the thermostat flush against the inner shell, install the rivets.
3. Reconnect the electrical wires by sliding the quick connect terminals on both sides of the thermostat.

REASSEMBLY

1. Push the fiberglass insulation back up to the thermostat. The insulation should not cover the thermostat.
2. Install the outer shell and top lid assembly. Be sure the inner shell is aligned inside the shell top hole (tabs on Type 15). See Figure 7 below.
3. Secure the assembly with the mounting screws.

VARIABLE THERMOSTAT KIT (TYPE 2, 5, 15 & 15B)

DISASSEMBLY

1. Remove the screws that secure the shell top and lid assembly to the painted outer shell. Remove the shell top assembly by pulling upward.
2. Remove the thermostat knob by pulling knob straight away from the oven. Knob may be tight and require a pliers for pulling.
3. Pull the fiberglass insulation back to expose the thermostat and electrical connections. See **CAUTION** above.
4. Remove the terminal from each side of the thermostat, taking care not to damage the connections by pulling on the wires. A needle-nose pliers may be required.
5. Remove the mounting nut that holds the thermostat in place. Be careful not to drop the nut into the oven as it may contact electrical components.
6. Slide the thermostat off the mounting stud and remove it from the oven. Some pressure may be needed to slightly spread the inner and outer shells to allow clearance. Be careful to avoid bending the shells.



Variable Thermostat Kit		
Variable Thermostat	1	1257430
Nut	1	
Knob	1	

THERMOSTAT INSTALLATION

1. Slide the new thermostat onto the mounting stud. See **CAUTIONS** above for handling the thermostat. Some pressure may be needed to slightly spread the inner and outer shells to allow clearance. Be careful to avoid bending the shells.
2. With the thermostat flush against the inner shell, install the mounting nut. Before tightening, be sure to center the thermostat shaft in the hole through the painted outer shell. Snug the nut to a maximum of 8 in-lbs.
3. Reconnect the electrical wires by sliding the quick connect terminals on both sides of the thermostat.

REASSEMBLY

1. Push the fiberglass insulation back up to the thermostat. The insulation should not cover the thermostat.
2. Install the shell top and lid assembly. To align the part, start on the hinge side and work around the perimeter, pushing down over the painted outer shell. Be sure the inner shell is aligned inside the shell top hole (tabs on Type 15). See Figure 7.
3. Secure the assembly with the mounting screws.
4. Install the knob. Be sure the knob does not rub or bind on the shell. If so, disassemble and adjust. Do NOT pry on the shaft to move the thermostat. See **CAUTIONS** above.

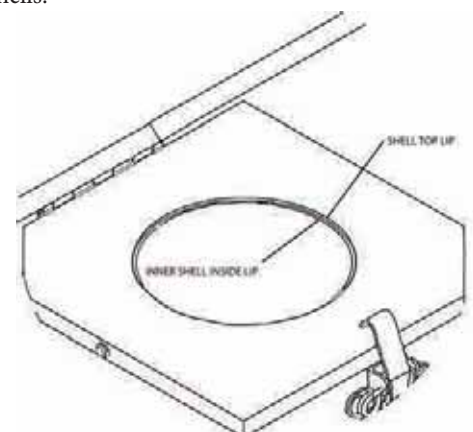


FIGURE 7

DISASSEMBLY

1. Remove lower base cover. The cover is a snap fit and can be pried off. Refer to Figure 8.
2. Follow the wires from the indicator light and unplug from the power inlet and the voltage selector switch (if applicable).
3. Remove the light terminal from the end of each wire, taking care not to damage the joining wires.
4. Remove the clip from the light body located inside the base. Slide the light out of the base.

Indicator Light	1	1257400
-----------------	---	---------

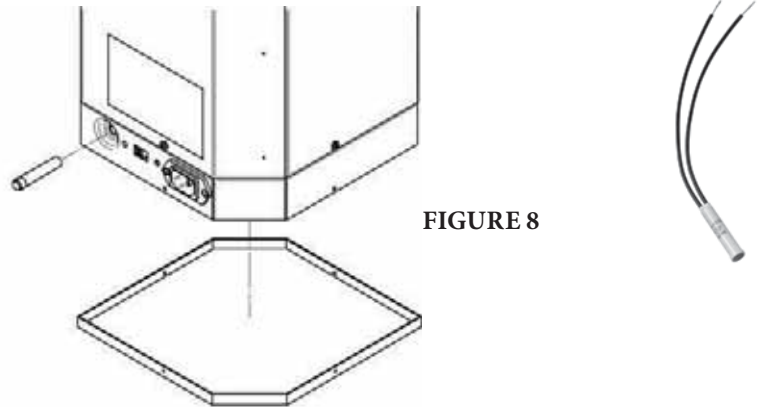


FIGURE 8

INSTALLATION

1. Slide the new light into position in the base. Install the retaining clip by sliding over the wires and the light body. Push the clip securely against the wall of the base.
2. Install the terminals on the end of the lead wire that plugs into the power inlet. Be sure to join the appropriate second wire before crimping the terminal. Make sure the final connection has proper electrical connections to both wires. Plug the terminal into the power inlet. Refer to corresponding wiring diagram as needed.
3. Install the terminal on the end of the remaining lead wire in the same manner as above. Again, be sure to properly join the second wire before crimping.

REASSEMBLY

1. Install the lower base cover. The cover may need a gentle tap to snap back into place. Thread the screws in only finger tight until all the screws are started in order to allow for slight adjustments.

LEAD KITS

Jumper Wire Kit		
Power Wires	1	1257530
Ground Wire	1	

Jumper Wire Kit		
Power Wires	6	1257531
Ground Wire	1	

Jumper Wire Kit			1257533
Power Wires	8	1257532	
Ground Wire	1		

1. Remove all old wires from base assembly
2. Reconnect leads and ground wire according to the corresponding wiring diagram.



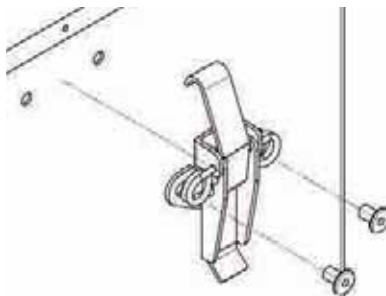
CAUTION:

All wiring should be done by licensed electricians in accordance with state and local codes, as well as the NEC (National Electrical Code) Standards. Improper installation or use may result in serious injury.

Always remove oven from power source before troubleshooting or repairing.

DISASSEMBLY

1. Unlatch latch from lid.
2. Using a 3/16" drill, carefully drill out the mounting rivets and remove the old latch.



Latch Kit		
Latch	1	1257380
Rivet	2	



LATCH INSTALLATION

1. Position the new latch and rivets as shown in Figure 9.
2. Using a pop rivet gun, secure the latch in place with the new rivets.

FIGURE 9

INSULATION (TYPES 1 & 2)

DISASSEMBLY

1. Open lid and remove any contents, including elevator rod.
2. Remove 2 (two) screws (on Type 1) or 3 (three) screws (on Type 2) that secure the shell top and lid assembly to the painted outer shell. Remove the shell top assembly by pulling upward and set aside.
3. If your model has a thermometer, remove 2 (two) mounting screws. Slowly pull the thermometer away from the shell, twist the display approximately 90° and push it back through the opening in the shell. The display will lay outside the outer shell, on the insulation.
3. Remove the 4 (four) lower screws that secure the painted outer shell assembly to the base. Carefully slide the outer shell up and off the insulated inner shell and set aside. The shell will have to be tipped slightly forward to clear the thermostat. Make sure the thermometer display and wires are not snagged or stretched as the shell is slid up.
4. Unplug the jumper wire from the thermostat. The jumper wire is the wire coming out of the base and routed straight to the thermostat. Lay the wire back out of the way.
5. Undo the 3 (three) twist ties holding the fiberglass insulation in place and remove the old insulation. **See CAUTION on next page.**

INSULATION INSTALLATION

1. Loosely wrap the new insulation over the heating element and inner shell, aligning the seam at the thermostat. Use same 3 (three) twist ties to hold the insulation in place.

REASSEMBLY

1. Plug the jumper wire back into the thermostat.
2. For Type 2's with thermometer, pick up the thermometer and lay it over the top of the inner shell. Continue to follow steps 3 through 6. For other models, skip to step 7. **See NOTE on next page.**
3. Slide the painted outer shell back down over the insulation and thermometer. When the shell is about half way down, push the thermometer display through its mounting hole. Be sure to tip the shell slightly forward until it clears the thermostat knob.
4. Secure the outer shell with the 4 (four) screws. Be sure the insulation does not sag down or stick out below the shell. If necessary, push the insulation back in around the bottom before securing and pull the insulation back up after the shell is installed.
5. Install the thermometer with the 2 (two) mounting screws.
6. Install the shell top, making sure the inner shell lines up inside the shell top hole. Be sure the thermostat knob is centered in the shell hole. If necessary, adjust thermostat mounting to allow free movement. Secure the top with 3 (three) screws.
7. Slide the painted outer shell back down over the insulation and secure with the 4 (four) screws. Be sure the insulation does not sag down. If necessary, pull the insulation back up after the shell is installed.
8. Install the shell top, making sure the inner shell lines up inside the shell top hole, and secure with the 2 (two) or 3 (three) screws.

Insulation	1	1257290	1257300
------------	---	---------	---------

DISASSEMBLY

Insulation	1	1257310	1257320
------------	---	---------	---------

1. Open lid and remove any contents.
2. On models with wheels, pull the clevis pin and remove the extending handle.
3. Lay the unit down on its back (handle side) and remove the base cover, wheel and axle assembly (if applicable) to expose the electrical wiring. Disassembly requires removal of all attaching screws. Set the unit back upright.
4. Remove the 2 (two) screws (Type 5) or 8 (eight) screws (Type 15/15B) that secure the shell top and lid assembly to the painted outer shell and remove the lanyard screw. Remove the shell top assembly by pulling upward and set aside.
5. If the oven has a digital thermometer, remove the 2 (two) thermometer mounting screws. On older models you may have to peel off the label to expose screws. Slowly pull the thermometer away from the shell, twist the display approximately 90° and push it back through the opening in the shell. The display will lay inside the outer shell, on the insulation.
6. Remove the 8 (eight) lower screws that secure the painted outer shell assembly to the base. Carefully slide the outer shell up and off the insulated inner shell. The shell will have to be tipped slightly forward to clear the thermostat. As the shell is slid up, make sure the thermometer display and wires are not snagged or stretched. The painted lower handle tube will slide out of the mounting bracket. Set the outer shell aside.
7. Lay the thermometer back away from the shell, leaving the wires connected in place.
8. Remove the ties or masking tape holding the fiberglass insulation in place. If taped, cut the tape at the overlapping seam of the insulation and remove the old insulation. **See CAUTION below.**

INSULATION INSTALLATION

1. Loosely wrap the new insulation over the heating element and inner shell, aligning the seam at the thermostat. Use same 3 (three) twist ties to hold the insulation in place.

REASSEMBLY

1. Begin sliding the painted outer shell back down over the insulation. When the shell is about half way down, push the thermometer display through its mounting hole. Be sure to tip the shell forward slightly until it clears the thermostat knob. As the outer shell nears the base, be sure the painted lower handle fits back through the mounting bracket and the tabs on the base all fit inside the outer shell.
2. Secure the outer shell to the base with the 8 (eight) screws. Be sure the insulation does not sag down or stick out below the shell. If necessary, push the insulation back in around the bottom before securing and pull the insulation back up after the shell is installed.
3. Install the thermometer with the 2 (two) mounting screws.
4. Install the shell top, making sure the inner shell lines up inside the shell top hole. Also be sure the thermostat knob is centered in the shell hole. If necessary, adjust thermostat mounting to allow free movement. Secure the shell top with the 2 (two) or 8 (eight) screws. Re-attach the lanyard with the mounting screw.
5. Install the base cover and axle assembly using the screws previously removed. Do not tighten the screws until all the screws are started in order to allow for slight alignment adjustments.
6. Install the handle and the clevis pin with clip.

**NOTE:**

Jumper wires must be installed outside of insulation.

Thermometer probe wire must be installed outside of insulation.

**CAUTION:**

Oven contains fiberglass insulation which may cause skin irritation. Gloves and proper skin protection are recommended while handling the insulation.

Care must be taken when handling the thermostat. Do not apply pressure on its components including the shaft and/or bottom leaf. The calibration of the part may be affected and cause undesired oven operation including under or overheating.

DISASSEMBLY

1. Remove lower base cover. On Type 2 ovens, the cover is a snap fit. On Types 5 & 15, remove all screws. Refer to Figures 10 & 11 below.
2. Unplug the wires connected to the switch, noting the position of each wire.
3. Note the orientation of the switch, i.e. whether the 120V position is to the right or left.
4. Using a 1/8" drill bit, drill out the rivets that hold the rivet in place and remove the switch.

Voltage Selector Switch Kit		
Rivets	2	1257410
120/240V Selector Switch	1	



SWITCH INSTALLATION

1. Position the new switch inside the base, making sure it is in the same orientation as the original switch.
2. Using the rivets supplied, secure the switch in place with a pop rivet gun.
3. Reconnect the wires to the switch terminals. Refer to the corresponding wiring diagrams as needed.

REASSEMBLY

1. Install the lower base cover. On Type 2 ovens, the cover may need a gentle tap to snap back into place. On Types 5 & 15, align the cover and begin threading in the attaching screws. Thread the screws in only finger tight until all are started in order to allow for slight adjustments.

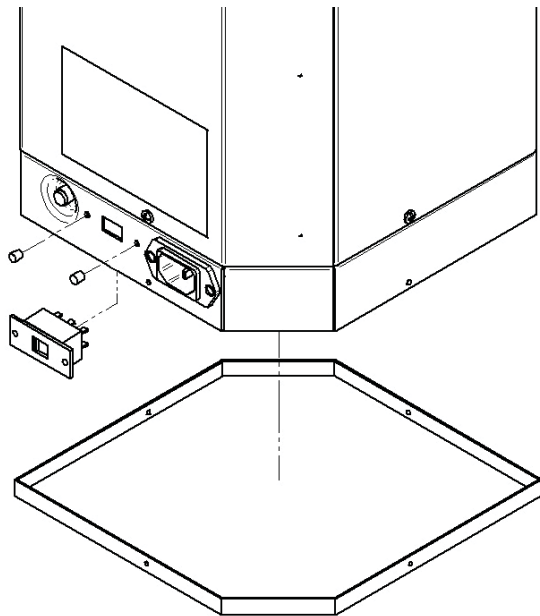


FIGURE 10

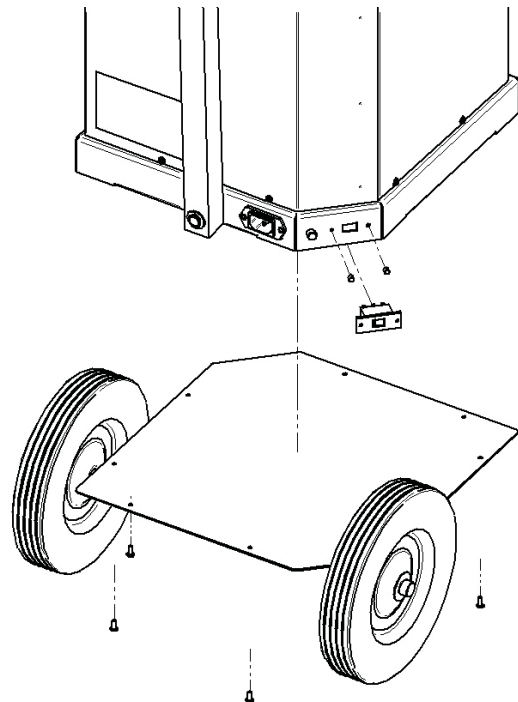


FIGURE 11